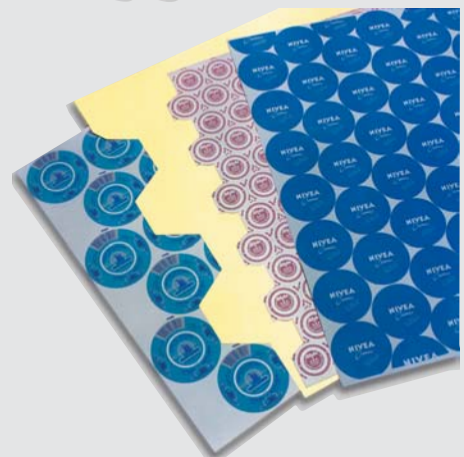
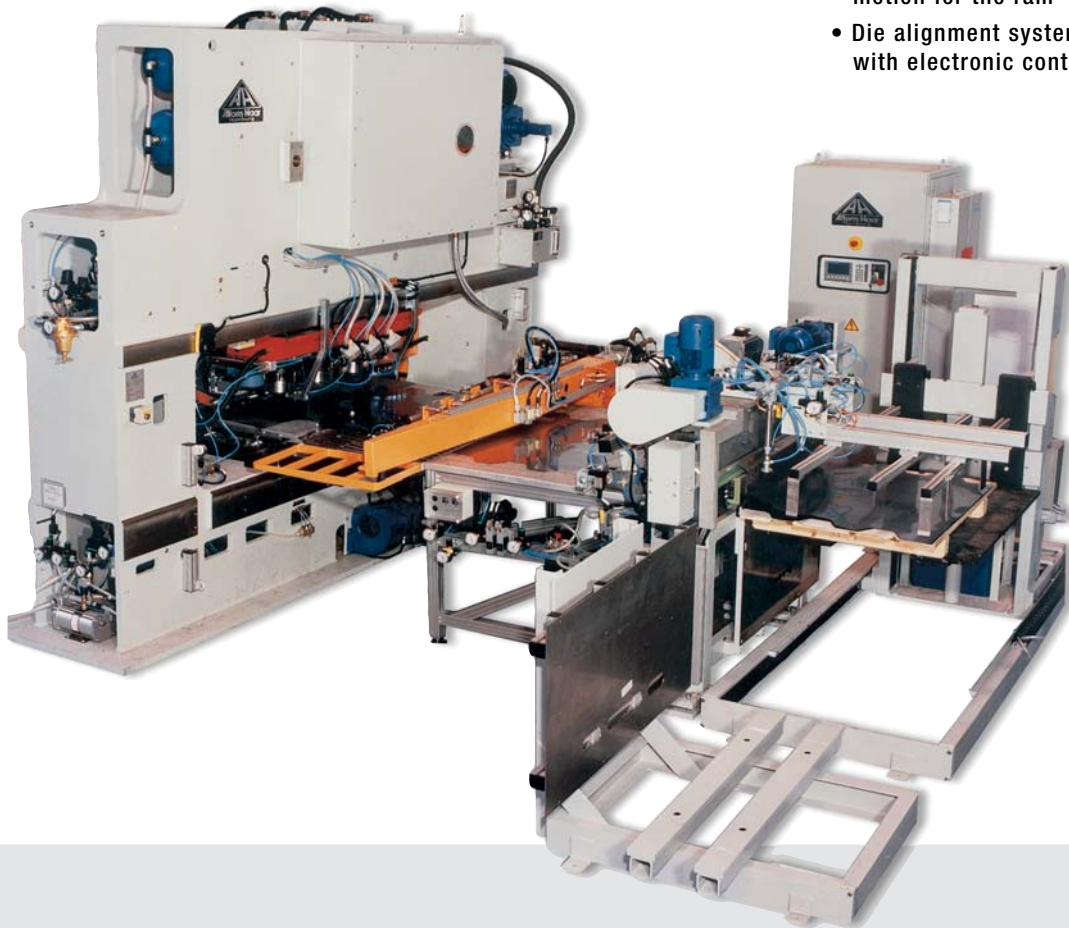


CNC-DF/AF-P(V)40 AUTOMATIC SHEET FEED PRESS



- Highly flexible press center
- 100% automation
- Material savings by utmost precision feed
- Manpower savings by direct sheet processing, eliminating strip shearing
- Flexibility by shortest changeover times
- Hydraulic overload safety device
- Crankshaft roller bearings
- Preloaded, playfree roller ram guidance
- AC-maindrive with static frequency converter including recuperation of flywheel brake energy
- Main motor driven slow motion for the ram
- Die alignment system with electronic control



CNC-DF/AF-P(V)40 AUTOMATIC SHEET FEED PRESS



TECHNICAL DATA

TYPE:	P	PV
CAPACITY:	40 t	40 t
STROKE LENGTH:	150 mm	170 mm
SPEED MAX:	200 rpm	180 rpm
TOOLING:	8-out	8-out
DRIVING POWER:	15 kW	18,5 kW
DRIVE:	DIRECT	BACKGEAR
CUT EDGE DIAMETER:	400	400
DRAW DEPTH:	40 mm; 1.575 inch	55 mm; 2.165 inch
SHEET SIZE:	1150 x 1000 mm 45 x 39 inch	1150 x 1000 mm 45 x 39 inch



16 roller rotary elements
hydraulic overload safety device
with combined ram adjustment

Material

- Scrolled and unscrolled sheets 0,1 - 0,5 mm / .004" - .02"
- Aluminum
- Tinplate
- DR-TFS

Output

- Cans up to 520 cpm
- Ends up to 1500 cpm

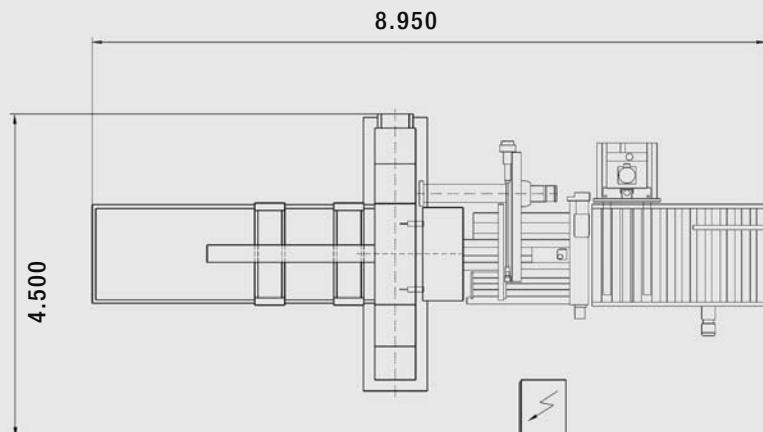
Tooling

- Cans - 1-out to 5-out
- Ends - 1-out to 8-out

Changeover Time

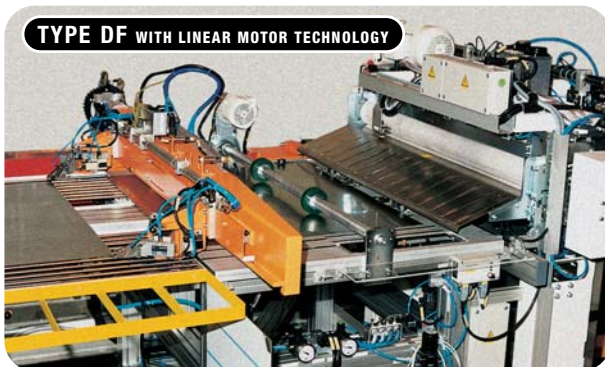
- < 1 hour incl. tool change

Reliable & Service friendly
by uncompromising use of
up-to-date-components in
modular construction.

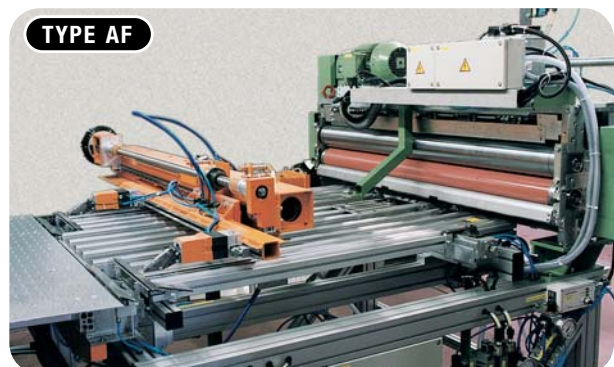


40 kW

DF/AF
AIR SUPPLY: 6 bar
HEIGHT: 3,9 m



TYPE DF WITH LINEAR MOTOR TECHNOLOGY



TYPE AF