

FPO 65

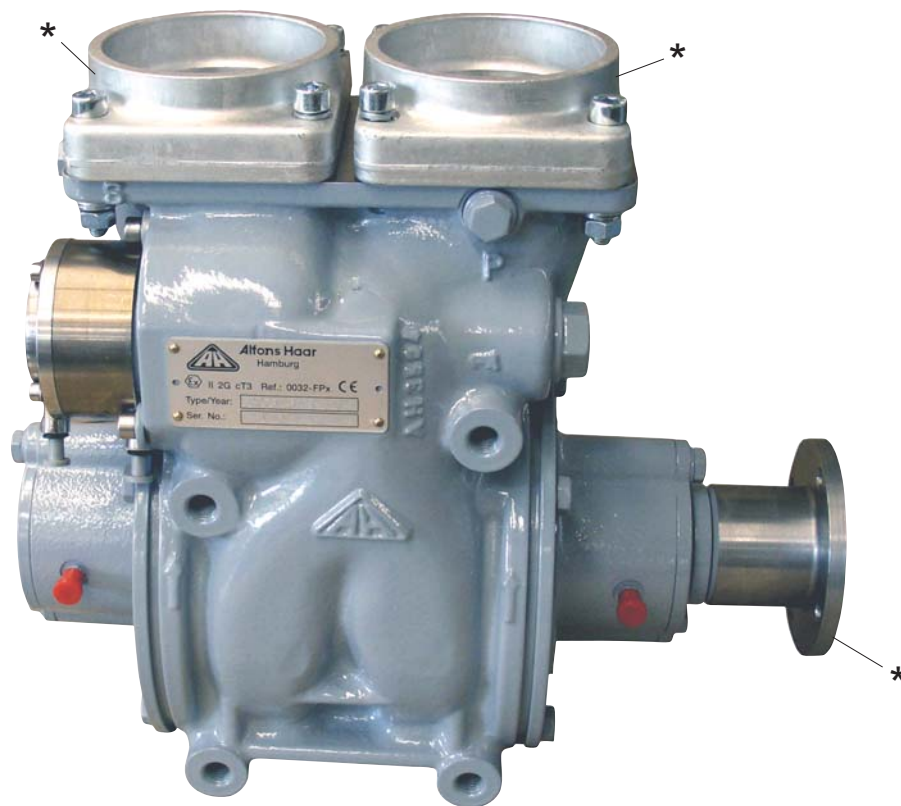
Tank truck vane pump



Alfons Haar

Self-priming vane pump

- depending on selected pump size up to 940 l/min with $\Delta p = 10$ bar



Ideal for hydraulic drive!

- computer optimized 3" to 2½" suction cross section for a quiet pump operation and high discharge rate
- large integrated pneumatic or mechanical by-pass valve
- ideal 3" and 2½" block flange for connection of the pipework to the pump in the tank truck
- very good blow down for product change
- excellent working life and simple service
- PTO or hydraulic drive

* accessories

FPO 65

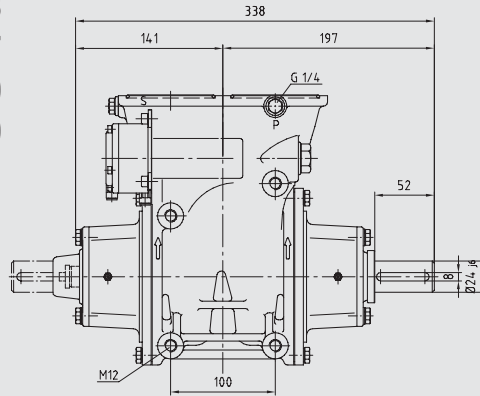
Tank truck vane pump



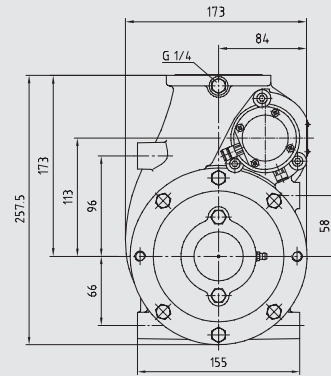
Alfons Haar

FPO... 65-289
-343
-407
-500
-600

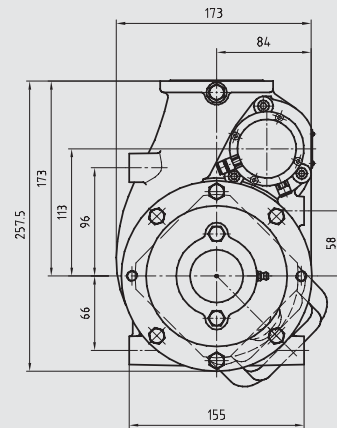
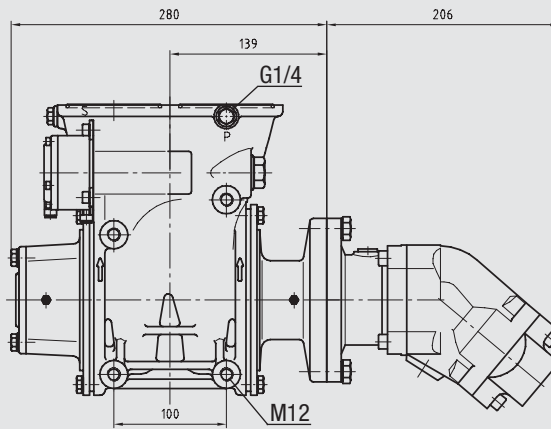
Dimensions



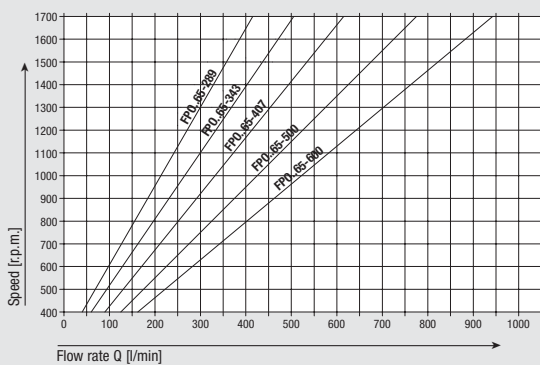
FPO G 65-



FPO S 65-



Flow rate at $\Delta p = 10$ bar



Input power at $\Delta p = 10$ bar

The input powers of the pump are minimum values for non-viscous media with viscosities up to approx. 12 cSt as e.g. heating oil EL, diesel and motor gasoline.

