

FPQ 150

REFUELLER VANE PUMP



Self-Priming Vane Pump

Depending
on selected
pump version
up to 3300 l/min
with $\Delta p = 8$ bar



Product shown with
optional accessoires

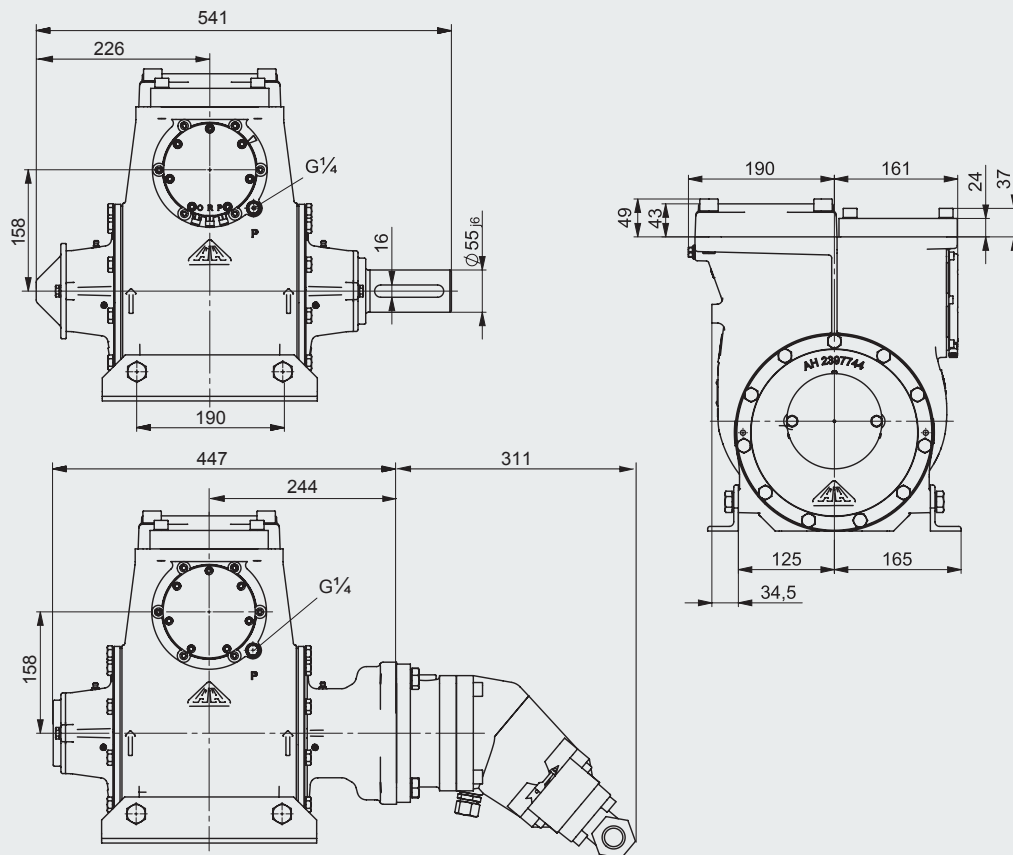
- + High efficiency + Low noise emission + Small body
- + Light weight By current modelling using numerical methods
- + Housing material: Grey cast iron + Shaft / Rotor: Steel
- + Vanes: POM compound – reinforced by steel inlay
No copper alloys, copper plating or galvanised steel – JIG compliant!
- + Pneumatic (remote controllable) or wire spring bypass valve
- + Operation without a flame arrestor is possible in compliance with the ATEX conditions.
- + Marked with CE Ex II 2 G Ex h IIA T4 ... T2 Gb X
- + Optional Drives: Integrated hydraulic (as shown), prop shaft, electric motor
- + Option: FPQ 150 with positively actuated vanes

FPQ 150

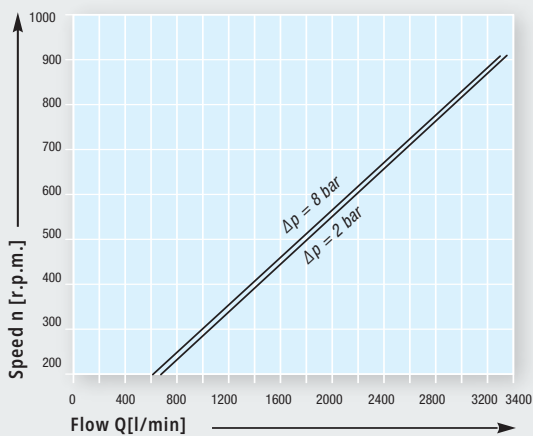
REFUELLER VANE PUMP



DIMENSIONS



FLOW RATE EXAMPLE



Adjusted Flow Rate and Power consumption

POWER CONSUMPTION

