

**MKA VANE METER with Seal-less Pulsar  
FOR AIRCRAFT REFUELLING**



**MKA 3351**  
100 - 4000 l/min\*



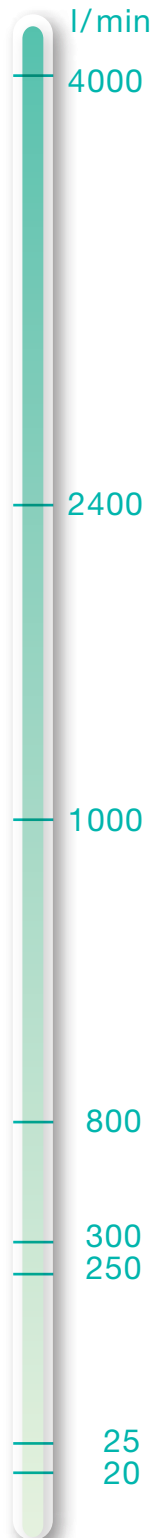
**MKA 2290**  
80 - 2000 l/min



**MKA 800**  
25 - 1200 l/min\*



**MKA 300**  
20 - 450 l/min



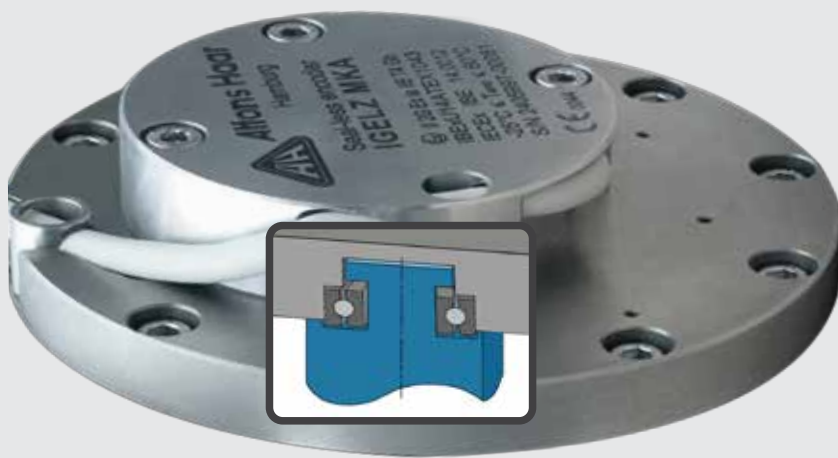
MID approved, from 20 l/min to 4000 l/min

# SEAL-LESS PULSER FOR ELECTRONIC COUNTERS



## Seal-less Pulsar

Analog: manipulation safe signal



Also available:

- Gear drive for mechanical counter
- Directly mounted anti-icing pumps
- Turbine flow meter

### CountMASTER Electronic Counter



### ELZ Electronic Counter



### TU 100 Turbine Flow Meter



CONFIGURATIONS	MKA 300	MKA 800 A1.../ B1...	MKA 2290 A1...	MKA 3351 A1...
Rated diameter	DN 40	DN 65	DN 80	DN 100
Measuring cell volume	0.30 l	0.80 l	2.29 l	3.35 l
Weight	approx. 5 kg	approx. 13 kg	approx. 33 kg	approx. 31 kg
Housing material	Aluminium cast	Aluminium cast	Nickel cast	Aluminium cast
Flow rate acc.to MID PER	20 to 500 l/min	60 to 1200 l/min	80 to 2000 l/min	100 to 3000 l/min
		* Flow rate with linearisation 25 to 1200 l/min $1 < \eta < 20$ mPas		* Flow rate with linearisation 100 to 4000 l/min $\eta < 20$ mPas

For dimensions and exact technical details please refer to the data sheets